



**ARCHITECTURAL
MILLWORK**

ACROSS NORTH
AMERICA

CCW

Inspired Design.



**FULL-SERVICE,
DEDICATED MILLWORK
FABRICATOR, FROM
ESTIMATING TO
INSTALLATION.**

ABOUT US

As a North American industry leader for custom architectural millwork and casework, we are a full-service company with a focus on developing long-term partnerships with our clients.

At CCW, we aspire to deliver impeccable quality to elevate our clients' brands in the marketplace.



OUR PROJECTS

FULL INTEGRATION

At CCW, we believe our work speaks for itself. Combining the warm, natural tones of custom millwork with contemporary metal, glass and natural stone accents creates a distinct and authentic one-of-a-kind ethos.

PRODUCT EXCELLENCE

We pride ourselves on excellent project management, the highest level of customer service and outstanding delivery. Every project takes into account our clients' desire for a unique finished look that aligns with their vision and sets the stage for success.

OUR SECTORS

We provide custom millwork and interior finishes to the following sectors:

- Restaurant
- Multi-Unit Residential
- Retail
- Institutional
- Commercial
- Office
- Hotel
- Sport

Restaurant

With a focus on diversity across market sectors, we can manage commercial projects both large and small. Our innovative approach and modern manufacturing processes create products of the highest quality.





Hotel







Multi-Unit Residential

Visit our website at www.ccwinc.com to see some of our recent projects; from inspired restaurant and hospitality designs to beautiful retail millwork - and everything in between - we can provide a bespoke style that elevates every project.

Office



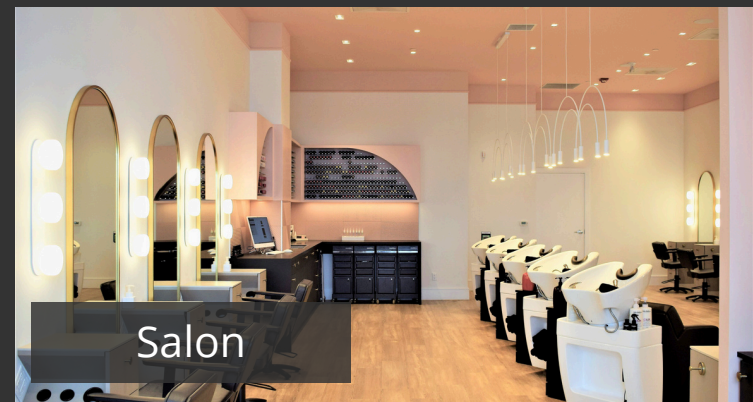
Sales Centre



Sport



Retail



Salon

**NORTH AMERICAN
INDUSTRY LEADER
FOR CUSTOM
ARCHITECTURAL
MILLWORK AND
CASEWORK.**

CONTACT US

HEAD OFFICE

56 Rankin Street, Waterloo, ON,
Canada, N2V 1V9

FLORIDA OFFICE

7726 Winegard Road
2nd Floor, Suite #13
Orlando, FL
32809

407-373-2003

519-886-2728

info@ccwinc.com

www.ccwinc.com

